



**elmwood**  
fine custom cabinetry

# Vintage Finishes



## Vintage Weathered Series

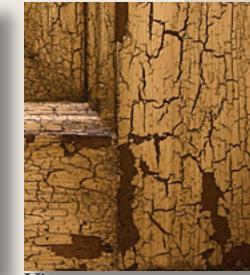
This series begins with pre-finish aging, a base stain that is followed by layered paint and glazes, highlighted by crackle and paint flake.



Vintage Weathered Bisque



Vintage Weathered Desert



Vintage Weathered Serengeti



Vintage Weathered Spring



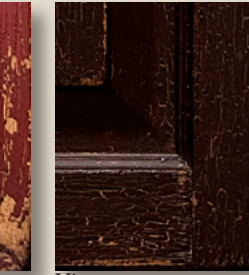
Vintage Weathered Mint



Vintage Weathered Coriander



Vintage Weathered Carmine



Vintage Weathered Sienna



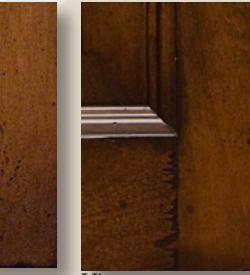
Vintage Weathered Conte



Vintage Weathered Ginger



Vintage Weathered Burlap



Vintage Weathered Rattan



Vintage Weathered Etruscan

## Vintage Reclaimed Series

This series is designed to simulate weather worn lumber. It begins with pre-finish aging followed by stain and glaze highlighted with an aging technique called "Wood Rot".



Vintage Reclaimed



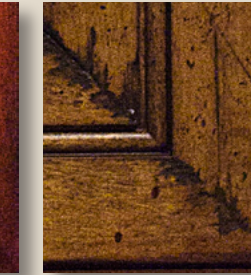
Vintage Dockside

## Vintage Cottage Series

This series begins with pre-finish aging, a base stain, followed by layered paint and glazes, highlighted by wood rot and fly specs.



Vintage Cottage Sangria



Vintage Cottage Wheat

## Vintage Crackle Series

This series begins with pre-finish aging, a base stain, followed by layered paint and glazes highlighted by subtle crackle and knife cracks.



Vintage Autumn Aged Crackle



Vintage Garnet Aged Crackle



Vintage Onyx Aged Crackle

## Vintage Renaissance Series

This series begins with pre-finish aging, a base stain that is followed by layered paint and glazes, highlighted by Bronze Leaf gilding on the White and Gold Leaf gilding on the Cream.



Vintage Renaissance White



Vintage Renaissance Cream

## Vintage Aged Series

This series begins with pre-finish aging, a base stain, followed by layered glazes and finished with post finish aging that is highlighted by gold leaf gilding on the Aged Cognac and a hint of silver tipping on the November Rain.



Vintage Aged Cognac



Vintage November Rain

## Vintage Faux Stone

This series is designed to emulate real stone and is meant for carved wood accessories.



Vintage Faux Stone

## Vintage Antique Brushstroke Series

This series begins with pre-finish aging followed by a hand-brushed application of emulsion paint then accented with several layers of glazes and top coats.



Vintage Parchment Antique Brushstroke



Vintage Linen Antique Brushstroke



Vintage Suede Antique Brushstroke



Vintage Coastline Antique Brushstroke



Vintage Wedgewood Antique Brushstroke



Vintage Coriander Antique Brushstroke

## Estate Series

This series is reminiscent of The Vintage Aged Cognac finish, with a simpler version of pre-finish aging followed by a series of glazes and no gold leaf gilding.



Estate Hazelnut



Hood: Natural Java Walnut above Faux Stone Carved base and Corbels, flanked by Warm Concrete Oyster cabinetry.



**elmwood**  
fine custom cabinetry

Scan to visit our Website:



Also, visit us at:



Copyright March 2013, All Rights Reserved.

Copyright belongs to The Elmwood Group Limited, our Dealers and Photographers. All unlawful reproduction in whole or in part of this catalog is strictly prohibited without express written consent from The Elmwood Group Limited. Specifications subject to change without notice. Print colors may vary from actual samples.