



Made  
with care.  
Designed  
to inspire.

Kitchens<sub>/4</sub>

Bathrooms<sub>/62</sub>

Custom furniture<sub>/78</sub>

Finishes<sub>/90</sub>

Reference<sub>/96</sub>

Harmonized lines. Perfect details. Our creations are indeed sights to behold.

Open a door or a drawer and discover the finesse of Lauriermax. We create spacious and ingenious storage solutions with flawless finishes.

And you'll enjoy these solutions each and every day.

For all your custom kitchen and bath needs look no further. Lauriermax is your go-to partner.

**Made with care.**

Designed to inspire.


# Kitchens Inspiration











# Contemporary Pure



**MINIMALIST EFFECT**

Do you love clean, modern lines? Have a look at our channel system options which offer you the versatility to create a truly modern European style kitchen.









Mix and match your finishes to create distinctive elements and give a rich, lively look to your kitchen. Here you can see a perfect blend of brown with white that creates a pleasing contrast. The cabinets, with custom chrome glass doors and LED lighting, create a bright, airy and peaceful space.





#### **WARM AND INVITING**

Bring warmth and a unique cachet to any project by adding a natural wood accent finish. This simple addition will make your space warmer and more inviting.





Bright and soothing. The combination of light grey wood textured laminate and white make the space inviting, relaxing—and the highlight of your home.

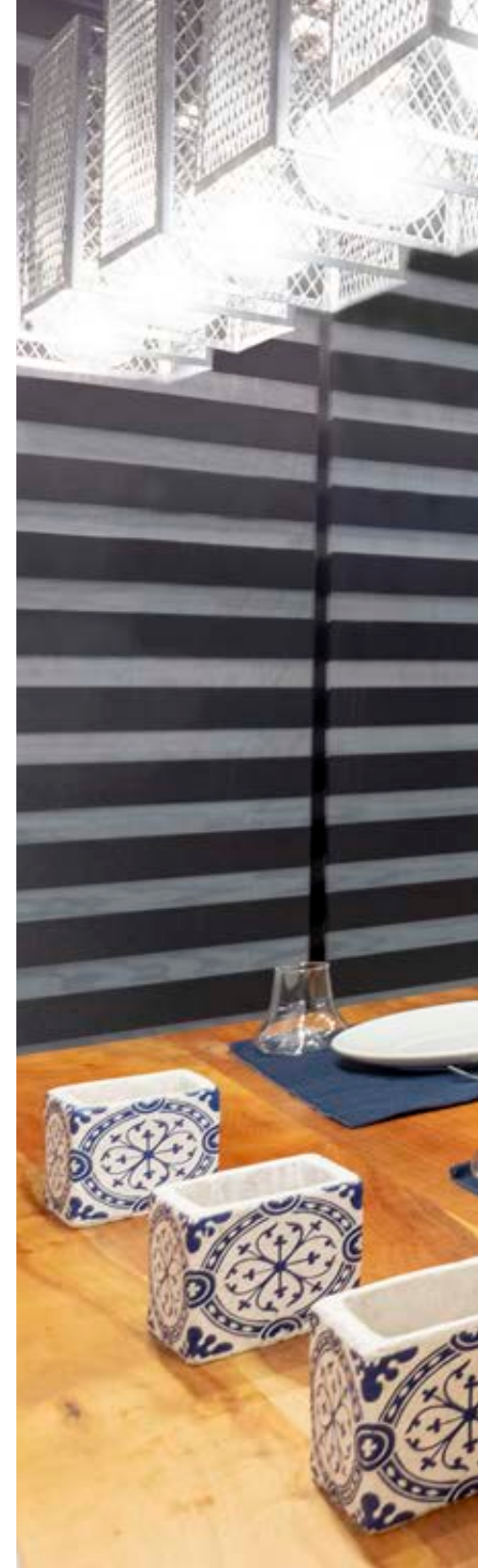






### **BLACK MAGIC**

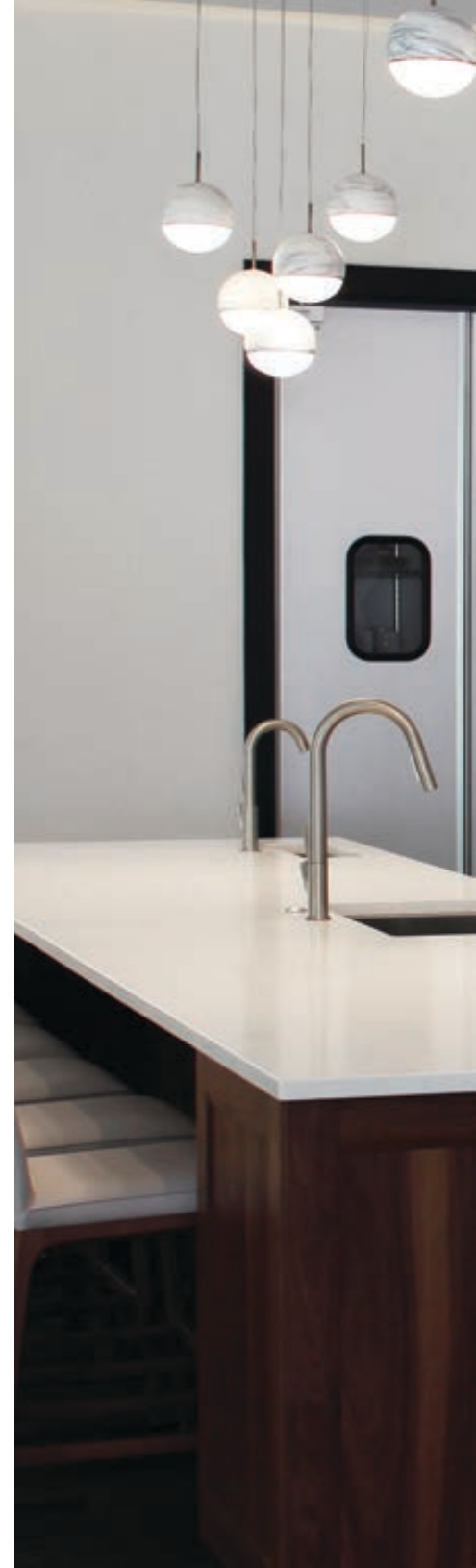
Do you envision the look and feel of a trendy, cozy English pub? Dare to use black and create an inviting space for memorable get-togethers.







This magnificent acrylic kitchen is functional and easy to maintain—without sacrificing elegance and style. The blend of acrylic, wood, and marble create a sublime and timeless look.















# Transitional Cozy



**A SIMPLE TOUCH. LONG-LASTING IMPACT.**

Just a small cabinet—but it truly packs a design punch. Its delicate lines and a bright yellow finish adds just the right touch of freshness and finesse to this kitchen.





Wall-to-wall glass cabinets add functionality and openness to this large kitchen. Glass cabinets are an excellent alternative to create an airy look in a vast kitchen area with multiple cabinets. Add some beautiful lighting for a soothing atmosphere!





Beautiful wall cabinets with custom Hexagon mullions harmoniously meld with the ceramic tile for a fetching look.









**GIVE YOUR KITCHEN SOME CHARACTER!**

Use varying textures and finishes to create a one-of-a-kind space. This mix of contrasting shades and textures as well as different handles make this kitchen both stunning and charming.

























No wall cabinets for this kitchen! Its custom open shelving is reminiscent of the industrial style of a trendy city loft.







#### HIDDEN TREASURES

Whatever the configuration of your kitchen, we can optimize even the smallest spaces with our ingenious and practical storage solutions.









Who says a kitchen should only have one island? This elegant kitchen is the epitome of functionality and optimized storage space thanks to two large islands that complement a standard counter.





















One space. Two different atmospheres. This magnificent kitchen features a bar area in a dark grey stain and a classic white kitchen. The island, which matches the bar, harmonizes the two spaces—all while giving them each a distinct feel of their own.















# Classic Hearty

**AN IMPRESSIVE  
CENTERPIECE**

This island is the star of this kitchen with its imposing size and custom details. The large columns on the four corners give the distinctive look of a handcrafted piece of furniture rather than an island. It's an ingenious way to add finesse to this heavyweight!













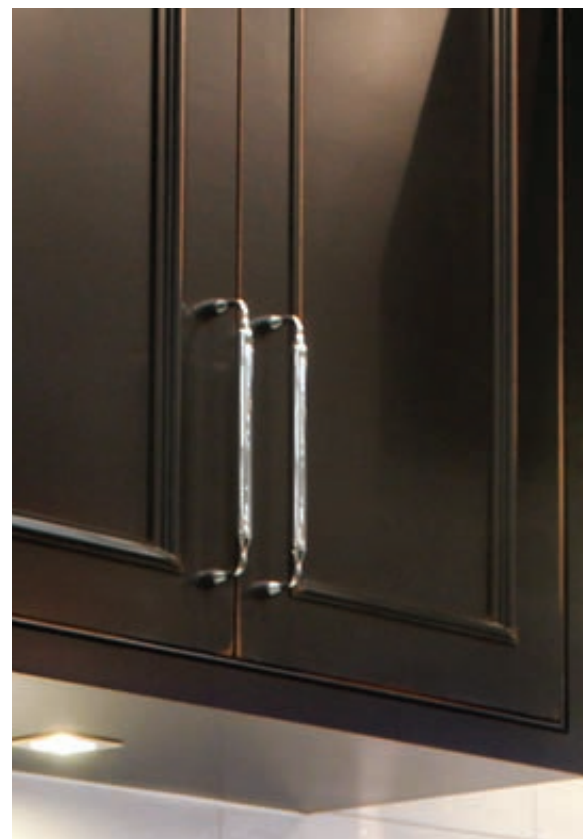
**AN ORIGINAL TWIST  
ON CLASSIC CHARM**

Varying materials  
and accessories give  
this classic kitchen  
a personality all of its  
own. This little space  
highlights the attention  
to detail and the  
high-quality  
craftsmanship.













Do you have a spacious kitchen? Why not add an integrated bar area? Very much in style, it adds a festive and relaxing area for entertaining. Feast your eyes on the walnut interiors in the wine cellar, which the space a rich and elegant look.









Looking for an enduring and timeless style? This kitchen's harmonious details are perfect to make it a showpiece for years to come. It offers a classic look that works even in today's most modern settings.





PANTRY

# Bathrooms Vision







This immaculate white vanity, with its modern symmetry and clean lines, creates a stunning contrast that highlights the gracious curves of the bath. This bathroom offers simple elegance that brings the atmosphere of a relaxing spa experience to your home.







These suspended cabinets in a warm walnut color add richness to the room. The under cabinet lighting makes the space feel open and inviting. Even an irregular layout can be optimized to create a one-of-a-kind masterpiece.













**A DARK HAVEN**

This all-black bathroom with a bevelled mirror gives the room an Art Deco feel. This twist between bygone eras and today's contemporary lines is both timeless and fashionable.









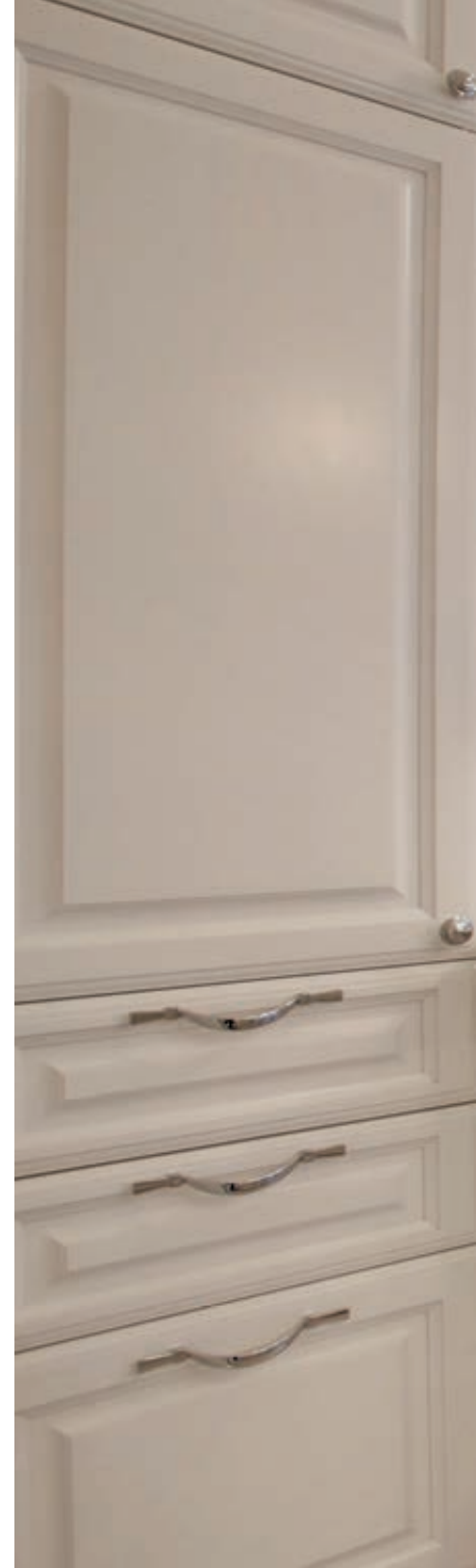
If you have a big enough bathroom, why not integrate a dressing table with a small makeup drawer and ample storage drawers' close by? This piece will definitely be the highlight of the room.





**CAPTIVATING  
OPULENCE**

The classic charm of this bathroom is reminiscent of French castles and royalty! Apart from the standard cabinets, notice the beautiful custom-made piece that our designers and artisans created to complement the decor. Now imagine what they can do for your dream project.













# Custom furniture Dream









Let your passion inspire you! Whether you are a wine, book or music lover, our designers will brainstorm to find the best way to showcase your collection. Imagine the sheer pleasure of savouring a prized vintage in this amazing wine cellar. Truly unforgettable!







**RICH MATERIALS. LUXURIOUS LOOK.**

The rich, exotic wood truly shines out in this subdued, yet amazing bar. The magnificent warm shades of Sapele Pommele strike an amazing balance with the polyurethane's glossy finish.







**YOUR SIGNATURE  
STYLE**

Thanks to our talented craftspeople, your cabinets and furniture will not only highlight your signature style but also create stunning looks in your home. Looking for something truly out of the ordinary? Talk to our designers and make your ideas come alive.





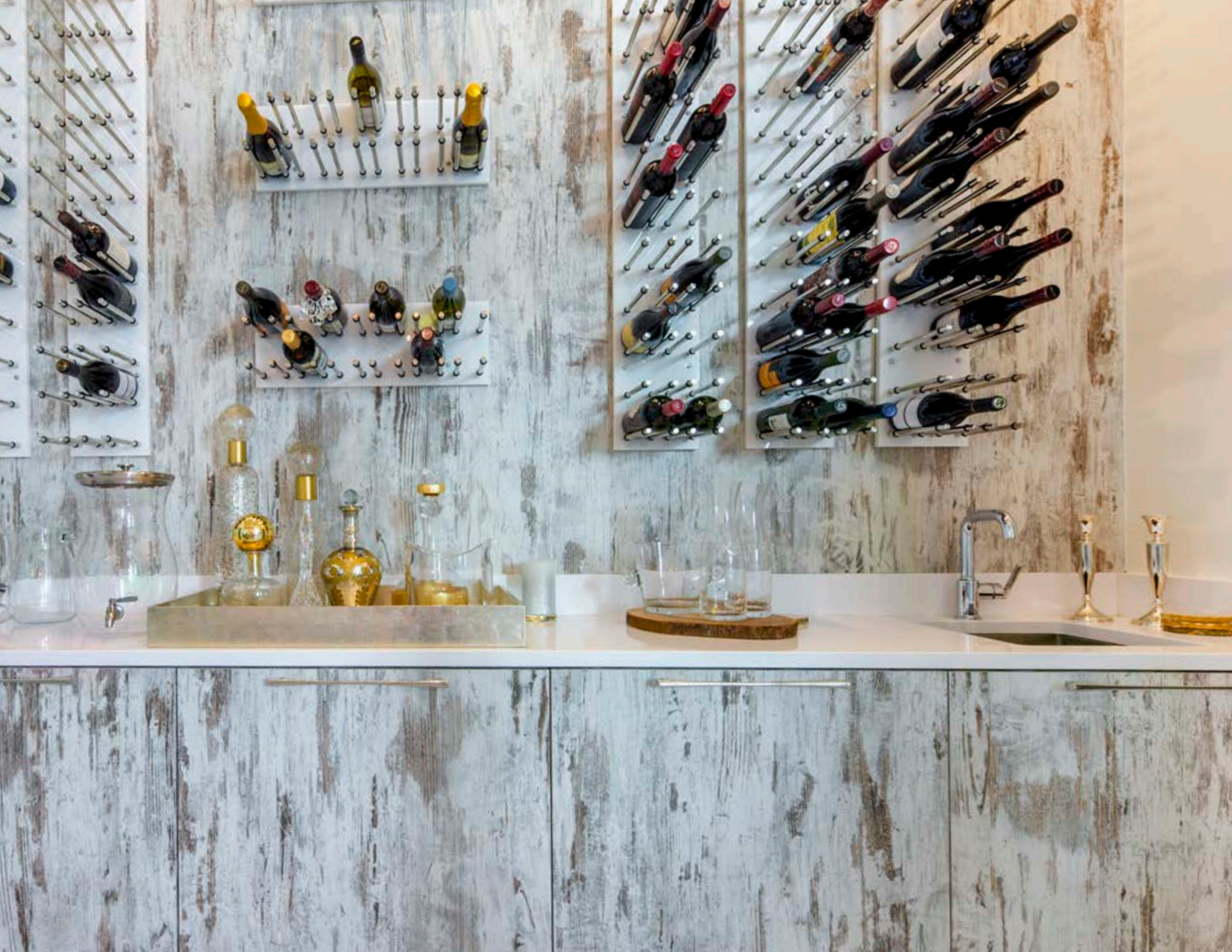




Do you have a vision in mind? We can help make your dreams come true. Behold this wine cellar, with its non-conventional finish and a unique presentation. The end result is truly stunning.









**A PLACE FOR  
EVERYTHING...**

...And everything in its place, as the old saying goes. This well-designed walk-in respects the adage in every way. With its many storage solutions, a practical counter area and open shelves that showcase beautiful accessories, you can see beyond a shadow of a doubt how our expertise can transform raw materials into real showpieces.







# Finishes Choice





# Wood



The prestigious, warm and inviting look of natural wood is timeless. We offer a wide variety of door styles and wood species to choose from along with a multitude of colors. Wood lends itself to all styles (classic, contemporary, modern, etc.), which allows you to find the perfect combination to satisfy even the most discerning tastes and create truly distinctive designs.

# Italian lacquer



Italian lacquer is a multi-step process of layers upon layers of a polyurethane finish, which is polished between coats to create a rich, high gloss. You can also opt for a satin finish, which offers a resistant matte style. The incomparable high gloss look of Italian lacquer is the perfect complement for all of your designs.



# Polygloss/ polymatte



*Proudly designed by Epoch Solutions, FL*

Polygloss is an MDF core material with clear polyester top coat applied on decorative laminate sheets for a high-gloss finish. Polymatte is an ultramatte clear polyester top coat applied on decorative laminate sheets that is characterized by a soft touch and appearance. These two products are extensively used for clean, modern looks.

# Acrylic



Acrylic is an MDF core material with a colored, high-gloss acrylic sheet applied to panels. This material has a UV protection agent integrated in the finish so that the color will conserve its rich glossy sheen for years to come. It is ideal for a modern, high-gloss look coveted in today's European style kitchens.

# Thermofoil



Thermofoil is an MDF core material on which a film of PVC plastic is thermofused to adhere to different forms. This material is offered in a wide variety of colors and door models. This is a cost-effective, low-maintenance option to create the room of your dreams.

# European laminate



Imported from Europe and then transformed locally into many different types of components, European laminate is similar to melamine. It is available in many colors and textures. If you are looking for a modern look, simply mix and match this product with other finishes to create a timeless and contemporary atmosphere.



# Polyester



This low-maintenance, resistant and affordable product is ideal for designing a melamine kitchen with a more refined look. There are many colors and doors models to choose from to create the kitchen of your dreams. It is the perfect complement to create a high-end look at a price to respect any budget.

# Melamine



This is a particle board core product that has a sheet of melamine resin applied on it through high-pressure heat. This quality product is one of the most economical options offered; it comes in a multitude of colors and finishes. The heat resistance, strength and affordability make this one of the go-to choices for designers.

# Reference Distinction





**PAGE 5**

**Cabinet construction:** Plain inset/Frameless  
**Door style:** Coplet-53-1021-PEA/Biva-03-1021-PEA  
**Wood specie:** Maple/Rustic Alder  
**Color:** CL9-1-52 (Cloud White)/CL9-1707-Gblack/  
 MR9-1618 (Soot)/CL0-1-881-Gblack



**PAGE 6**

**Cabinet construction:** Frameless  
**Door style:** Perfecto  
**Material:** Polymatte  
**Color:** U999PM/ST2 (Black)



**PAGES 8-9**

**Cabinet construction:** Framless/Channel system  
**Door style:** P-105  
**Material:** Melamine  
**Color:** H51 (Zahara)



**PAGES 10-11**

**Cabinet construction:** Frameless  
**Door style:** Venice/Beckman-02/  
 Polished stainless steel frame  
**Wood specie:** Engineered Macassar Ebony/Maple  
**Color:** Natural Polyurethane/BG-1-47 (White)



**PAGES 12-13**

**Cabinet construction:** Frameless  
**Door style:** 1000-PEJ/Natura  
**Material:** Thermofoil/European laminate  
**Color:** 176 (Frosty White 2)/S013 (Cypress Point)



**PAGES 14-15**

**Cabinet construction:** Frameless  
**Door style:** Natura  
**Material:** European Laminate  
**Color:** LN27 (Barn Oak)



**PAGES 16-17**

**Cabinet construction:** Frameless  
**Door style:** Euro-SE  
**Material:** Thermofoil  
**Color:** 5306/2D (Black)



**PAGES 18-19**

**Cabinet construction:** Frameless  
**Door style:** Florence/Biva-03-1021-PEA  
**Material:** Acrylic/Wood  
**Wood specie:** Black American Walnut  
**Color:** 5100-SR (White)/Natural



**PAGE 20**

**Cabinet construction:** Frameless

**Door style:** Barcelo/1000-F

**Material:** Melamine/Thermofoil

**Color:** 174 (Black Artika)/04 (White Gloss)



**PAGES 22-23**

**Cabinet construction:** Frameless

**Door style:** Borodine-PEU/Huntington-Onyx C/  
Nelli-PEB

**Material:** Italian Lacquer/Wood

**Wood specie:** Cherry/MDF

**Color:** F949 (White)/CL9-1558- Gbrown/  
CL9-1-608 (Titanium)



**PAGES 24-25**

**Cabinet construction:** Frameless

**Door style:** Catlin-03-1021

**Wood specie:** Maple

**Color:** CL9-1048- Gblack (Stampede)/  
CL5-1510 (Midsummer Night)



**PAGES 26-27**

**Cabinet construction:** Frameless

**Door style:** Classic-03-1021-PEA

**Wood specie:** Maple

**Color:** CL9-1-677/CL0-1731



**PAGES 28-29**

**Cabinet construction:** Plain inset/Frameless

**Door style:** Carmi-53/Herringbone mullion custom door

**Wood specie:** Brushed Ash/Maple

**Color:** CL9-1163 (Rockport Gray)/CL5-1943- Gcream/  
CL9-1734 (Onyx)



**PAGES 30-31**

**Cabinet construction:** Frameless

**Door style:** Shaker-52-PEA

**Wood specie:** Maple

**Color:** CL9-1-677/CL0-1349- Gblack (Thatch Brown)



**PAGES 32-33**

**Cabinet construction:** Frameless

**Door style:** Shaker +-03-1021-PEA

**Small drawer:** Elgreco-PEA

**Wood specie:** Maple

**Color:** CL9-1-32- Ggreen (Lichen Stone)



**PAGES 34-35**

**Cabinet construction:** Frameless

**Door style:** Renoir-01-1001-PEL

**Wood specie:** Maple

**Color:** 501-26-06- Gbrown (Ice Milk)/  
CL5-1906- Gbrown





**PAGES 36-37**

**Cabinet construction:** Frameless  
**Door style:** Cameron-03-1021  
**Wood specie:** Maple  
**Color:** MR5-1604 (Fandango)/BG-1-47 (White)



**PAGES 44-45**

**Cabinet construction:** Plain inset  
**Door style:** Casali 1P-PEA  
**Wood specie:** MDF  
**Color:** MR9-1616 (Linen White)



**PAGES 38-39**

**Cabinet construction:** Frameless  
**Door style:** Raphael-52  
**Wood specie:** Maple  
**Color:** BG-1-47 (White)



**PAGES 46-47**

**Cabinet construction:** Frameless  
**Door style:** Shaker + -07-MOUL5058-PEA  
**Wood specie:** Maple  
**Color:** CL9-1-677/CL5-1724-Gcharcoal



**PAGES 40-41**

**Cabinet construction:** Frameless  
**Door style:** Podium 90-03-1021-PEA  
**Wood specie:** Maple  
**Color:** CL9-1-677



**PAGE 48**

**Cabinet construction:** Frameless  
**Door style:** Antonello-01-1001  
**Wood specie:** Maple  
**Color:** BG-1-47 (White)/CL5-1-1020-Gwhite



**PAGES 42-43**

**Cabinet construction:** Frameless  
**Door style:** Ballini-03-1021/Huntington-53-1021/  
 Polished stainless steel frame  
**Material:** Wood/Acrylic  
**Wood specie:** Red oak straight grain/Maple  
**Color:** CL0-1925-Gwhite/CL9-1393-Gwhite  
 (Coastal Breeze)/5114 (Black)



**PAGES 50-51**

**Cabinet construction:** Plain Inset 1"  
**Door style:** Dubois +-53-1021-PEA  
**Wood specie:** Maple  
**Color:** MR9-1424 (Artic White)



**PAGES 52-53**

**Cabinet construction:** Beaded inset/Frameless

**Door style:** Richmond-52-PEA/  
Shaker-B-07-moulX-PEA

**Wood specie:** Maple

**Color:** GM-0-30 (Dark Night)/CL5-1-908



**PAGES 60-61**

**Cabinet construction:** Full frame overlay

**Door style:** Renoir-51-1003-PEC

**Wood specie:** Maple

**Color:** RP-2-143- Gbrown (Chamomile)



**PAGES 54-55**

**Cabinet construction:** Plain inset/Frameless

**Door style:** Gallo-53-1010/Venice

**Wood specie:** Maple/Black American Walnut/  
Architectural wood veneer

**Color:** CL9-2142 (Whispery White)/  
MB-16-05 (Mist)/Natural high-gloss polyurethane



**PAGE 63**

**Cabinet construction:** Frameless

**Door style:** Plain slab

**Material:** Melamine

**Color:** K15 (Cannes)



**PAGES 56-57**

**Cabinet construction:** Beaded inset

**Door style:** Richmond-52-PEA

**Wood specie:** Maple

**Color:** GM-0-30 (Dark Night)



**PAGES 64-65**

**Cabinet construction:** Frameless

**Door style:** Perfecto

**Material:** Polymatte

**Color:** W1000PM/ST2 (Premium White)



**PAGES 58-59**

**Cabinet construction:** Frameless

**Door style:** Renoir-53-1021-PEP

**Wood specie:** Maple

**Color:** CL9-1-52 (Cloud White)/  
CL5-1-408 (Marshlands)



**PAGES 66-67**

**Cabinet construction:** Frameless

**Door style:** Barcelo

**Material:** Melamine

**Color:** 529 (Takase Teak)





**PAGES 68-69**

**Cabinet construction:** Frameless  
**Door style:** Rouault-03-1021  
**Wood specie:** Maple  
**Color:** CL9-1-677



**PAGES 76-77**

**Cabinet construction:** Frameless  
**Door style:** Gericault-01-1002-PEH  
**Wood specie:** Maple  
**Color:** MR5-1430 (Ragtime)



**PAGES 70-71**

**Cabinet construction:** Frameless  
**Door style:** Shaker-56-MOUL5057-PEA  
**Wood specie:** Maple  
**Color:** CL9-1350-Ggray



**PAGE 79**

**Cabinet construction:** Frameless  
**Door style:** Millais-03-1021  
**Wood specie:** Maple  
**Color:** SG-E-68



**PAGES 72-73**

**Cabinet construction:** Frameless  
**Door style:** Renoir-01-1001-PEC  
**Wood specie:** Maple  
**Color:** CL9-1-677



**PAGES 80-81**

**Cabinet construction:** Frameless  
**Door style:** Schinkel-03-1021-PEA  
**Wood specie:** Brushed White Ash  
**Color:** CL5-1492-GGray (Hillsborough Beige)



**PAGES 74-75**

**Cabinet construction:** Frameless  
**Door style:** Renoir-01-1003-PEP  
**Wood specie:** Maple  
**Color:** BG-1-47 (White)



**PAGES 82-83**

**Cabinet construction:** Frameless  
**Door style:** Venice  
**Wood specie:** Sapele Pommele  
**Color:** Natural high gloss polyhurethane



**PAGES 84-85**

**Cabinet construction:** Plain inset  
**Door style:** Rockwell +-03-1021-PEA  
**Wood specie:** Rustic Alder  
**Color:** CL9-1-997-Gblack



**PAGES 86-87**

**Cabinet construction:** Frameless  
**Door style:** Massa-SE  
**Material:** European laminate  
**Color:** Used wood



**PAGES 88-89**

**Cabinet construction:** Frameless  
**Door style:** Renoir-03-1021-PEB  
**Wood specie:** Birch  
**Color:** CL5-1598-Gblack



**PAGE 91**

**Cabinet construction:** Frameless  
**Door style:** Nelli-H-05-5013-PEB/Massa  
**Material:** MDF/European laminate  
**Color:** CL9-1862 (Black Blue)/Noce Carvaggio

Thank you to our dedicated partners that have worked tirelessly to find and share many of the pictures found in this brochure.

It is thanks to their contribution, creative ideas and talent that, combined with our daily work, we can create living spaces that are quite simply sublime.

**Lauriermax**







[lauriermax.com](http://lauriermax.com) - 1-855-561-4614