

# **Kitchen Cabinets Bathroom Vanities Closet Systems**





# Contents

07	Cabinets
47	Vanities
57	Closet System
60	About Hanssem
62	Hanssem Advantages
64	Technology & Craftsmanship
66	Materials & Cabinet Construction
70	Door Styles, Designs & Finishes





# Everyday is Special with Hanssem.

When it comes to cabinet making, nothing is more important than wood. Our commitment begins with using only the finest natural woods and wood materials for your cabinets. We hand select the most beautiful natural wood, skillfully sorting the variation of graining and hue. We proudly manufacture in New Jersey, USA, and source our wood materials domestically and globally.

At Hanssem we take pride in offering the solutions necessary to make your dream home a reality. Hanssem manufactures kitchen and bathroom cabinetry as well as closet systems. Whether it's framed or frameless; hand-stained or painted, stock or custom-sized, we have all the details you desire. Experience what Hanssem has to offer where the possibilities are endless!



# **Cabinets**

**American Classic  
/ Framed**

Irvine  
Jacksonville  
Illinois  
Hudson









# Irvine

Maple / Charcoal Gray

## FLAT CENTER PANEL

5-pc, Tenon Door, 2 1/4" Frame, Eased Edge. Calgary Bead, 1/4" Veneer Center Panel.

## DOOR PROFILE



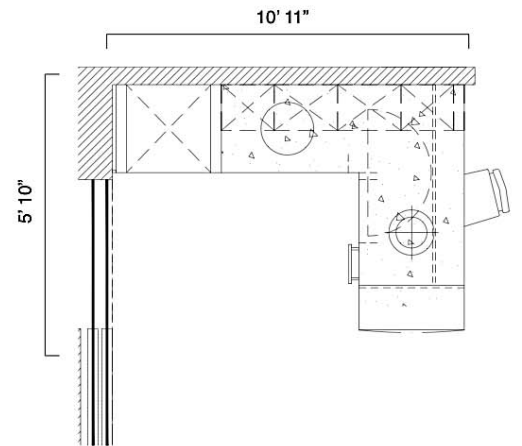
Framed Open Shelf



Blind Corner Base Cabinet with Wood Half Moon Susan



**Utilize every square inch of your space with pull-out organizers and blind corner base cabinets.**













# Jacksonville

Maple / Frosty White

## FLAT CENTER PANEL

5-pc, Tenon Door, 3" Frame  
Eased Edge Wide Slant Bead  
1/4" Veneer Center Panel

## DOOR PROFILE

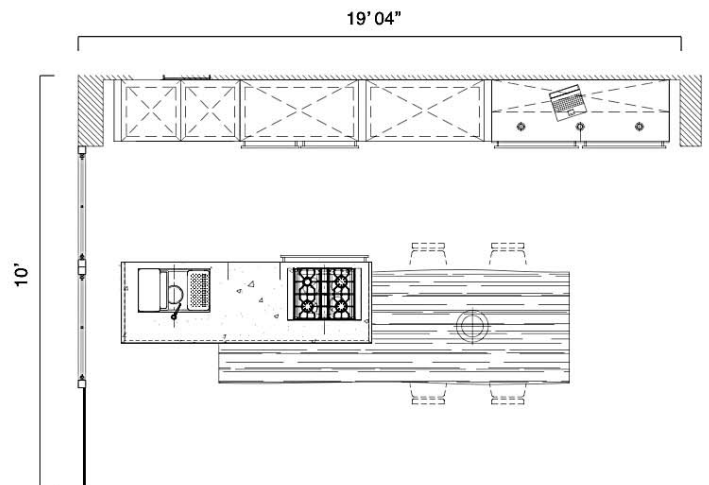


Cutlery Divider





**Add a modern flair to make your kitchen a multi-functional space with an all-inclusive island and workstation.**











# Illinois

Maple / Gray

FLAT CENTER PANEL

5-pc, Shaker Door

2 1/4" Frame, Eased Edge

Deep Bevel Bead, 1/4" Veneer Center Panel

DOOR PROFILE



Pull-out Organizer

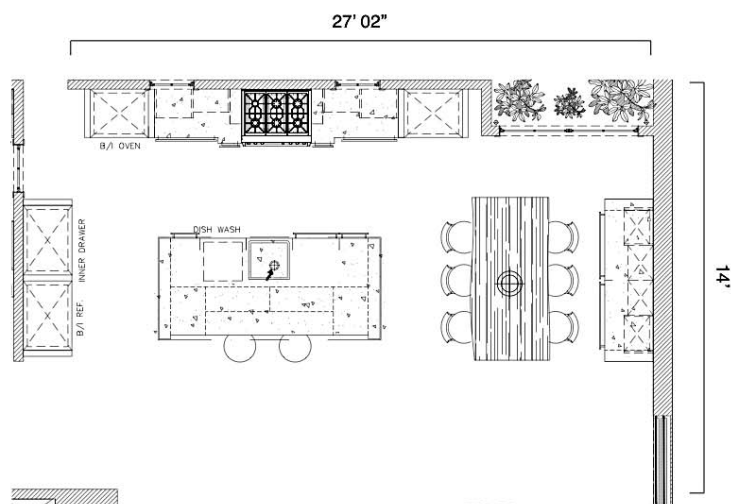


Utility Cabinet with Rollout Shelves





**Crisp style and pull-out storage convenience ensures a subtle mixture of traditional and modern lifestyle.**











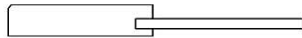
# Hudson

Maple / Frosty White

## FLAT CENTER PANEL

5-pc, Shaker Door  
2 1/4" Frame, Eased Edge  
1/4" Veneer Center Panel

## DOOR PROFILE



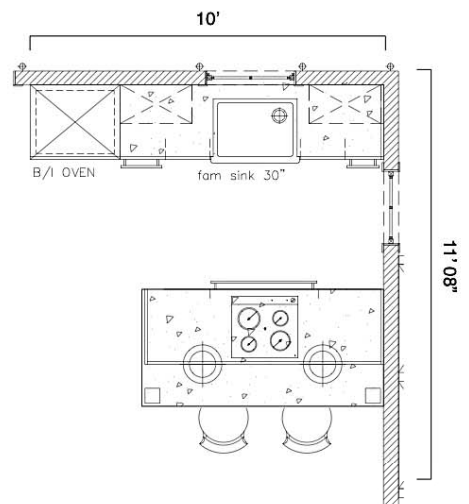
Cutlery Tray and Pegboard







**Hudson is a classic shaker door style. Add a functionality to the classic home style kitchen with Cutlery Tray and Pegboard.**





# Cabinets

## Euro / Full Access

Florence  
Isabel  
Iowa  
Jefferson  
Harrisburg









# Florence

PET / White Gloss

## FLAT PANEL

Particle Board Core

PET Front & Melamine Back

with Coordinating 1.2mm Edge Band

## DOOR PROFILE

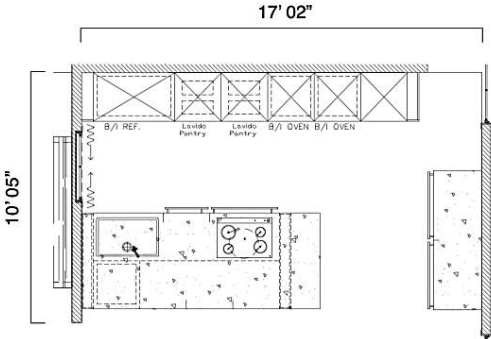


Cutlery Tray & Pegboard





Appreciate style with state-of-the-art edge banded doors that have a light-reflecting high gloss white finish for a sleek, modern look.













# Isabel

Maple / Blue

FLAT CENTER PANEL

5-pc, Shaker Door

2 1/4" Frame, Eased Edge

1/4" Veneer Center Panel

DOOR PROFILE



Cutlery Tray

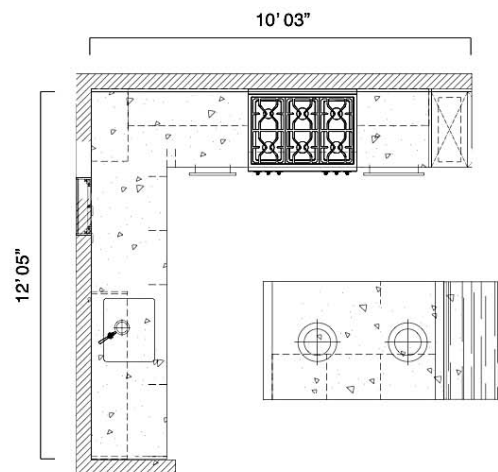


Chrome Magic Corner Base Cabinet





Bring a new twist to a traditional style with a wide variety of paint doors. Our finishes are skillfully applied multiple times including robotic top coating process resulting in a smooth and durable surface.













# Iowa

Maple / Mist

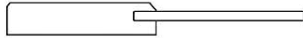
FLAT CENTER PANEL

5-pc, Shaker Door

2 1/4" Frame, Eased Edge

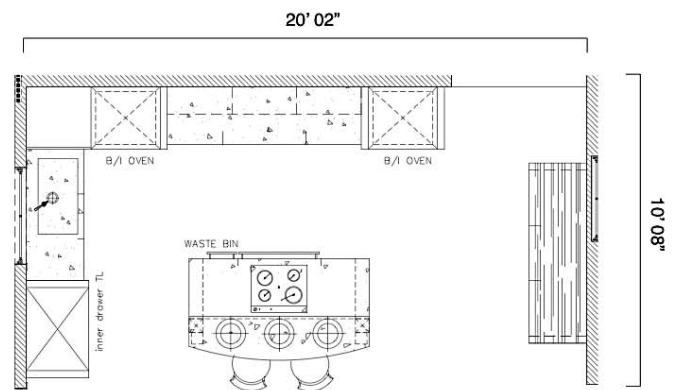
1/4" Veneer Center Panel

DOOR PROFILE





**There are no two trees alike. The true beauty of wood is in its natural variations of graining and hue. Our artisans use a hand-wiping process that stains the wood and enhances the natural beauty in your space.**













# Jefferson

Maple / Crystal White

## RAISED CENTER PANEL

5-pc, Solid Wood Door

2 1/4" Frame, Eased Edge

Square Raised Panel

## DOOR PROFILE

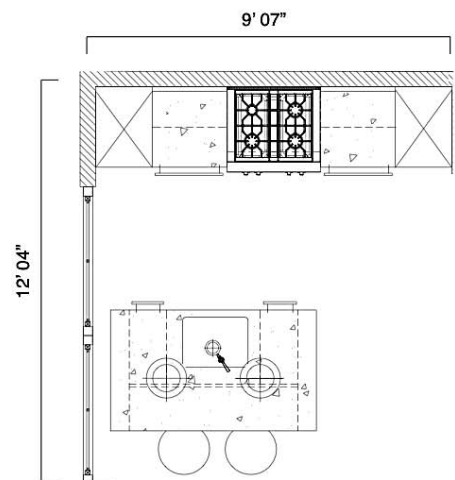


Wood Spice Drawer Insert and Cutlery Tray





Find the delicate texture of a raised center panel that comes from exquisite craftsmanship. We select the finest solid wood and hand-sand each door to create the classic silhouette of Jefferson door.













# Harrisburg

MDF / Frosty White

FLAT PANEL

Slab Door, Eased Edge

MDF Core with Coordinating PVC Edge

DOOR PROFILE

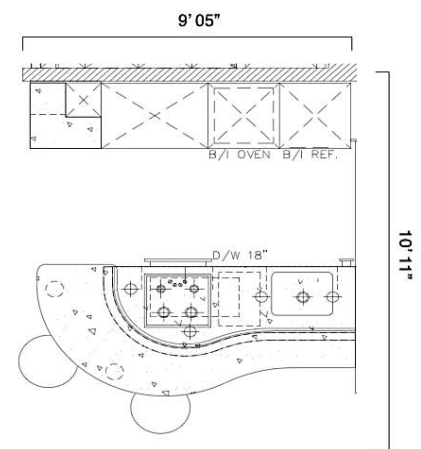


Pull-Out Base Organizer





**Harrisburg is made with quality processed wood for lasting durability and design features. Create your own design with our endless modification options.**







# Vanities

## Bathroom & Powder Room

Hudson

Florence

Kelly



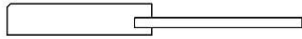
# Hudson

Maple / Frosty White

FLAT CENTER PANEL

5-pc, Shaker Door  
2 1/4" Frame, Eased Edge  
1/4" Veneer Center Panel

DOOR PROFILE



Our steady selling door, Hudson, comes in Frosty White and gives a sleek, minimalistic style to your room. Bring your dream bathroom into reality with any style for any space.















# Hudson

Maple / Natural

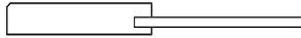
## FLAT CENTER PANEL

5-pc, Shaker Door

2 1/4" Frame, Eased Edge

1/4" Veneer Center Panel

## DOOR PROFILE



If you have a master or powder room, having a luxury vanity will turn your space into a whole new world. It also has a lot of drawers of various sizes for storing personal items. Keep your space tidy and organized with your vanity base.



# Florence

PET / White Gloss

## FLAT PANEL

Flat Panel, Particle Board Core,  
PET Front & Melamine Back with  
Coordinating 1.2mm Edge Band

## DOOR PROFILE



**Wall mount vanity also called floating vanity gives the illusion of more floor space which gives a more spacious look to your bathroom. Wall mount vanity allows you to make the most of your available space and provides both visually stunning and efficient storage space.**











# Kelly

Rift Cut Oak / Mist

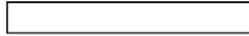
FLAT PANEL

Slab Door

Flat Horizontal Grain Veneer Door

.5mm Edge Banding

DOOR PROFILE



One of the most wished for and enjoyed elements in the master bath is a double sink vanity that adds something interesting to the overall aesthetic of any bathroom. Styles, designs, finishes, and materials know no bounds. From wood to manufactured wood, you can discover that one perfect bathroom vanity to enhance your very own dream bath.





# Closet System

Launching in 2021









# About Hanssem



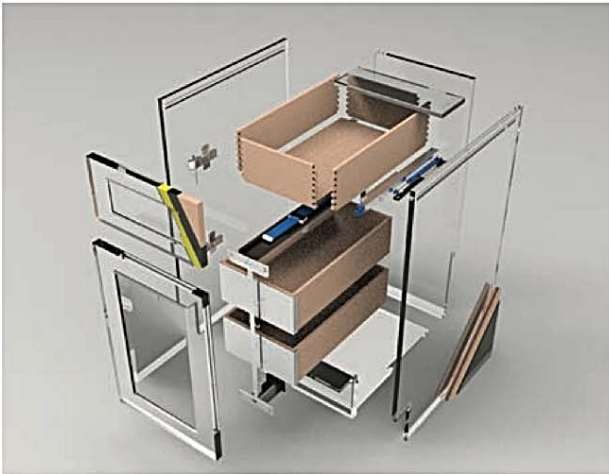
## Our Story

We're an international corporation recognized as a premier cabinet manufacturer. While we are headquartered in South Korea, we locally and globally source wood materials and manufacture our cabinets in New Jersey, USA. Over the past 30 years, Hanssem has established a network of over 500 independent dealers from Boston to Florida.



## Our Commitment

Our commitment to quality begins with using only the finest materials and hardware for products. We blend highly advanced manufacturing technologies and automation with the skills of an experienced craftsmen to create a truly unique approach to cabinet making.



## Our Standard

We strive to deliver beyond your expectations. There is no need to “upgrade” your cabinets for a better quality. With all cabinets plywood construction, wood dovetail drawer boxes and soft-closing runners and hinges made by Blum, the leader in the hardware industry set our cabinet quality as standards.



## Our Promise

Your experience with Hanssem doesn’t end with high-quality standards. We provide a wide range of door styles, colors, sizes, and more. Not only that, all of our cabinets are backed with Limited Lifetime Warranty which will ensure lasting impressions. Dream outside the limits. With Hanssem, you can make it happen.

# Hanssem Advantages

We manufacture all cabinetry in our Edison, NJ, plant using state-of-the-art machinery and finishing systems. We use the finest materials from the industries leading European and North American suppliers and combine them with over 30 years of manufacturing expertise to bring our customers the finest quality cabinets available today.



## **Made in the USA**

All our cabinets are proudly manufactured in the USA with domestically and globally sourced EPA certified wood. All wood-working and assembly of our cabinet is done at our facility in Edison, New Jersey.



## **Higher Standards - The Hanssem Difference**

All cabinets are constructed using durable  $\frac{3}{4}$ " plywood tops, bottoms, and sides, wood dovetail-cornered drawer boxes, and soft-closing runners and hinges made by Blum®, a leader in the hardware industry.





### Advanced Technology & Quality Craftsmanship

Our cabinets go through extensive processes to end with a high-quality finished product. We use state-of-the-art machinery and hand craftsmanship to ensure consistent cabinet structure.



### Limited Lifetime Warranty

We ensure all of our products meets customer satisfaction and excellence with a Limited Lifetime Warranty. Don't worry about long-term quality with us.



### 100% Modification with a Great Value Price

Endless modification options are available to you at a great value price. From styles of doors to finishes, we can help you create your dream kitchen, however you'd like.



### Delivery Service

We have our own warehouse where we can manage the entire production process of our cabinets and provide jobsite delivery service for our local dealers.

# Advanced Technology & Quality Craftsmanship

Our products are crafted by skilled cabinet makers using proven construction methods and innovative manufacturing techniques. We create beautiful, high-quality, American-made cabinets using environmental friendly woods that will stand the test of time.



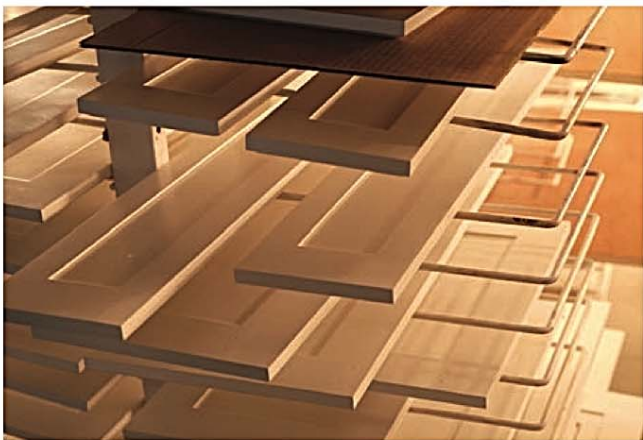
## We Set New Standards

Our special "T Joint" construction method and upgraded cabinet construction standards have resulted in durable, American made cabinets people value.



## It's All About Detail

Skilled cabinet makers carefully select which wood to use. These craftsmen add details and artistic appeal to any finish, that creates a rich look for every style.



### **Advanced Automation System**

We use highly advanced automation for consistency, precision, and speed. State-of-the-art edge banders, CNC routers, finish spray machines, and panel saws add to the superiority of the finished product.



### **Skilled Artisans**

The quality of our cabinet is a top priority. Our cabinets are individually built to make sure they are the best quality. Each door and drawer are thoroughly inspected to meet our high expectation before being shipped to the jobsite.



# Materials & Cabinet Construction

## Materials Origins

We believe in building an authentic relationship with our customers is important. Our customers learn essential insights into our products and construction process.

### Wood

Mapleton Particle Board	USA
White Melamine	USA
Plywood	USA, Vietnam, Cambodia
Laminate	USA(Wilson Arts/Formica), Canada (Formica/Tafisa)
Thermofoil	USA, Germany, Japan
Maple, Cherry, Rift Cut Oak	USA

### Finish

Paint	USA (Sherwin-Williams)
Stain	USA (Sherwin-Williams)
Top Coat	USA (Sherwin-Williams)

### Parts/Adhesive

Edgeband	USA, Canada
Glues	USA
Packaging	USA
Hinges	USA (Blum®), Austria (Blum®)
Runners	USA (Blum®), Germany (Hettich®)
Aluminum	USA
Door Bumper	USA

## Our Environmental Sustainability

Manufactured in the USA  
with CARB2 Compliance



At Hanssem, we support your healthy and sustainable lifestyles with green cabinetry options from Hanssem. We are committed to make sure all of our products meet applicable environmental standards. Our products are CARB2 compliant which means the products comply with the regulations set by the California Air Resources Board (CARB) and United States Environmental Protection Agency (EPA) to have extremely low formaldehyde content and protect the public from airborne toxic contaminants.

## Our Partnerships



## Standard Cabinet Specifications



We strive to deliver beyond your expectations. There is no need to “upgrade” your cabinets for a better quality. All plywood construction, Blum® soft-close runners and hinges, wood dovetail drawer boxes, and other features come standard with Hanssem cabinets.

**Side, Top & Bottom Panel:** ¾” thick clear coated plywood

**Back Panel:** ¼” clear coated plywood

**Shelves:** ¾” clear coated plywood

**Toe Kick, Open Cabinet & Cabinets with Finished Interior:** Matching color on plywood

**Drawer Box & Runner:** Blum® soft close full extension / wood dovetail

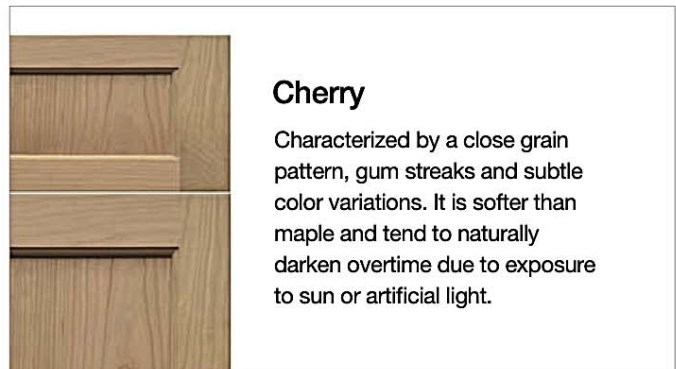
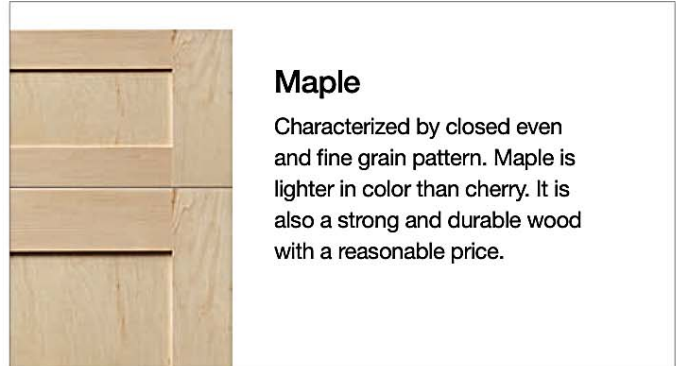
**Hinges:** Blum® soft close hinge

**Small/Large Drawer Front:** Matching

**Front Edge Band:** PVC coordinating with door

## Natural Wood

Natural wood doors are made from trees growing in different environments and conditions. This results in the tree having naturally varying grains and sap wood. Other imperfections such as burls, pecks, shakes, knots and mineral streaks also occur in natural woods.





## Manufactured Wood

Manufactured wood products known as substrates are hidden behind laminate, vinyl film, or wood veneers.



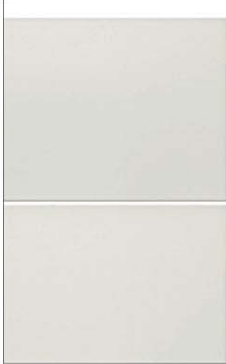
### Lacquer

Made by applying several coats of high quality lacquer/paint to the MDF base.



### Colortone on MDF

Colortones are pigmented base coats that are similar to paint. It is finished with a clear coat conversion varnish.



### Laminate

A surface material that is made from paper and resin being pressed and glued together. They are the most durable and easiest to clean.



### PET / Textured Melamine

Particle Board Core with PET Front & Melamine back or PB Core with Textured Melamine front & back.



### Thermofoil

A flexible vinyl material that is applied by heating the vinyl and molding it over medium-density fiberboard. These doors are easy to clean, durable and offer many design options.



### Aluminum Framed Glass

Characteristically lightweight and has high reflectivity, enhancing the illumination in your home.

# Door Styles & Designs

## Door Styles



### Flat

Slab style door without a raised or recessed panel. Perfect Match for both traditional and contemporary looks.



### Tenon

Tenon door is considered one of the strongest woodworking joints for attaching two pieces of wood at 90 degrees.



### Miter

Beautiful mitered door assembled by cutting the stiles and rails at a 45-degree angle.



### Shaker

Features a flat center panel and square edges. With minimal detailing, shaker is one of the famous door styles.



### Molding

From simple to ornate, classic to modern, add an accent with the decorative molding door.

## Door Designs

Framed | American Classic  
Full Access | Euro

### Flat Center Panel



**FREESIA**  
Foil | Latitude East  
Full-Access Only



**FARMINGTON**  
Maple |  
Frosty White  
Full Access Only



**HUDSON**  
Maple |  
Frosty White



**HANOVER**  
Cherry | Cinnamon



**HAMPTON**  
MDF |  
Frosty White



**HYACINTH**  
Maple | Lunar Gray



**ISABEL**  
Maple | Blue



**ILLINOIS**  
Maple | Gray



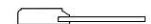
**IRENE**  
Maple | Denim



**IRIS**  
Maple | Gray



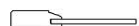
**IRVINE**  
Maple |  
Charcoal Gray



**INDIANA**  
Maple | Blue



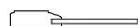
**IOWA**  
Maple | Mist



**IDAHO**  
Maple | Natural



**IMMANUEL**  
Cherry |  
Walnut Brown



**IMPERIAL**  
Cherry | Colonial



**JERSEY**  
Maple | Natural



## Flat Center Panel

Continued



**IRVINGTON**  
Maple |  
Crystal White



**INGLEWOOD**  
Maple |  
Charcoal Gray



**JACKSONVILLE**  
Maple |  
Frosty White



**JULIA**  
Maple |  
Harvest Gold



**KANSAS**  
Maple | Sepia

## Flat Door

Full Access Only



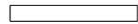
**DAVIS**  
Laminate | White &  
PVC Square Edge



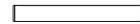
**DAVIS UNO**  
Laminate | White &  
Silver Metallic Edge



**DAYTON**  
Textured Melamine  
| White Chocolate



**DAISY**  
Textured Melamine  
| South Wester



**DENNIS**  
PET | Gray Matte



**FLORENCE**  
PET | White Gloss



**FLORIDA**  
Foil | Wenge



**FAIRFIELD**  
Foil | Satin White



**HARRISBURG**  
MDF | Satin White  
Both Framed & Full  
Access



**ISAAC**  
Lacquer | Gray  
Gloss & Two Tone  
Edge



**ISAAC UNO**  
Lacquer | Burgundy  
Gloss & Silver  
Metallic Edge



**KENNEDY**  
Maple | Denim  
Both Framed &  
Full Access



**KELLY**  
Maple | Mist

# **Raised Center Panel**



**HARTFORD**  
MDF | Frosty White



**FRANKLIN**  
Foil | Satin Antique White  
Full Access Only



**JEFFERSON**  
Maple | Crystal White



**JESSICA**  
Cherry | Colonial



**JASMINE**  
Cherry | Walnut Brown  
Framed Only



**JANE**  
Cherry | Sepia  
Framed Only



**KENSINGTON**  
Maple | Frosty White



**KEYPORT**  
Cherry | Cordovan

# **Molding Door**



**KINGSTON**  
Maple | Cinnamon



**KATHERINE**  
Maple | Walnut Brown

# **Aluminum Door** Full Access Only



**KATE**  
Glass | Square Frame



**KAILA**  
Glass | Concealed Frame

# Door Finish

Glaze and Hightlight options are also available.  
Actual product colors may vary from colors shown on here.  
We strongly recommend you to view an actual product sample.

## Maple



### PREMIUM COLORS



## Colortone on MDF





Cherry



PREMIUM COLORS



Rift Cut Oak



PREMIUM COLORS



**Thermofoil**



WHITE



BRUSHED  
WHITE



SATIN WHITE



SATIN  
ANTIQUE  
WHITE



BRUSHED  
ALUMINUM



FASHION  
GRAY



WENGE

PREMIUM COLORS



HG WHITE



HG ANTIQUE  
WHITE

**PET / Textured  
Melamine**



WHITE  
GLOSS



GRAY  
MATTE



WHITE  
CHOCOLATE



SOUTH  
WESTER

**Lacquer**



GRAY  
GLOSS



BURGUNDY  
GLOSS

# Limited Lifetime Warranty

This warranty is provided to the original consumer purchaser, starting from the Hanssem Dealer's original date of purchase. The lifetime of cabinets is expected to be 10 years. Based on all other warranty terms and conditions being met, warranty claims will be prorated based on the expected lifetime of the product.

## What does this Limited Lifetime Warranty cover?

Hanssem warrants its "covered products" to the original consumers for ten years to be free from all defects in workmanship and materials under normal residential use. Covered products include cabinet boxes, doors, drawers, shelves, and accessories manufactured by Hanssem. This warranty explicitly excludes any items not manufactured by Hanssem that may be sold with the cabinets.

Hanssem will replace defective covered parts for the original consumers free of charge during the warranty period. Hanssem will not pay any expenses related to the removal, or reinstallation of the covered part. After inspection, Hanssem will replace or repair a covered part at its discretion. If the specific product is no longer available Hanssem reserves the right to supply a "best match" alternative.

## Component Pass-Through Warranty

Although Hanssem does not warrant components, it will pass through any warranties received by component suppliers, to the extent permitted by such component suppliers.

Replacement hinges, drawer slides, and other accessories are subject to availability from our suppliers. If a claim is filed after a product becomes obsolete, the manufacturer will replace the discontinued product with a similar and comparable product to the original.

## What is not covered?

This Warranty is limited to defective parts replacement and does not include labor or damage incurred during installation, removal, storage, handling, repair, or replacement. Hanssem cabinets purchased prior to 2021 April are not covered by Hanssem's Limited Lifetime Warranty.

The Limited Lifetime Warranty does not apply to goods or any parts that have been subject to accident, negligence, alteration,

abuse, or misuse. Hanssem also does not warrant Express, Implied or Statutory, any accessory or parts NOT manufactured by Hanssem.

This warranty does not apply to Thermofoil, Acrylic, Laminate, or Melamine products that discolor, delaminate or bubble if installed without the use of properly installed heat shields adjacent to appliances or fixtures such as ovens or lights that generate high temperatures. These warranties do not apply to cabinetry ordered and purchased unfinished.

Also, natural woods vary in color and characteristics and exhibit subtle changes as they age. Wood doors are made from trees growing in different environments and conditions. This results in naturally occurring such as variation in color, grain, mineral streaks, pinholes which are not considered defects. Also, cabinet colors darken or lighten over time due to sunlight, smoke, household cleaners, and other environmental conditions. Painted doors may eventually have visible cracking around the joint areas. These variations are not considered defective and will not be replaced under Hanssem's Warranty.

These warranties are the exclusive warranties of Hanssem and are in lieu of all other warranties, expressed or implied, including the implied warranties of merchantability and fitness for a particular purpose.

This warranty is non-transferable but gives the original consumer specific legal rights. You may also have other rights that vary by state.

## How Do You Obtain Warranty Service?

To obtain performance under these Limited Warranties, first contact your authorized Hanssem dealer, who will arrange for an inspection. A dated sales receipt as proof of purchase is required to obtain benefits from these warranties. If a dealer is unavailable, please contact our Customer Service Department.

In keeping with our policy of continuous product improvement, we reserve the right to change product specifications without notice.

\* Warranty for Contract Orders as per contract terms.

This warranty excludes all industrial, commercial and business usage.



# Contact Us



## Corporate Headquarter

HANSSEM US  
20 Kilmer Road  
Edison, NJ 08817  
United States

EMAIL  
[marketing@hanssemus.com](mailto:marketing@hanssemus.com)

PHONE  
908. 754. 4949

WEB  
[www.hanssemus.com](http://www.hanssemus.com)

 HANSSEM